



## Article list - Pneumatic

**188-900-(636/698/735)**

Pneumatic cylinder  
10 kg



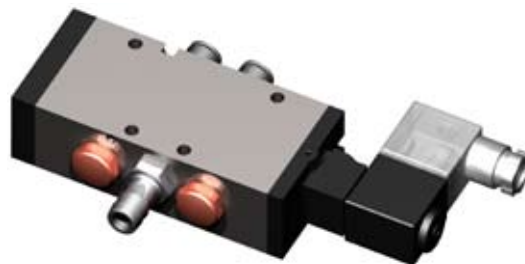
**188-450** Pneumatic valve

Manual 5/3  
With closed center  
0,7 kg



**188-455** Pneumatic valve

Electric 24V DC 5/2  
With spring return  
0,6 kg



**188-458** Pneumatic valve

Double electrical 24V DC 5/3  
With closed center  
0,7 kg



**188-460** Coil

24V DC  
0,1 kg



**188-465** Connection

24V DC with lamp  
0,1 kg



## Article list - Pneumatic

**188-485** Connection  
24V DC with lamp and cord  
0,1 kg



**188-459** Flow control  
10mm 1/4  
0,1 kg

**188-461** straight nipple  
10mm 1/4  
0,1 kg

**188-462** T nipple  
10mm  
0,1 kg

**188-463** Hose nipple  
9mm 1/4  
0,1 kg

**188-464** Muffler  
1/4  
0,1 kg

**188-470** Splice nipple  
10mm  
0,1 kg

**188-489** 90 degree nipple  
10mm  
0,1 kg

**188-472** Nipple trousers  
10mm  
0,1 kg

**188-466** Hose  
10mm PUR  
0,1 kg

**188-467** T clip  
10mm Plastic  
0 kg



## Article list - Pneumatic

**188-468** Open control system  
Pneumatic double electric valve 5/3  
Remote control with receiver and  
transmitter, 24V DC, the receiver also  
have buttons for manual control.  
Premounted on a plate.  
2 kg



**188-469** Control system built-in  
Same as in 188-468, with  
manueverbuttons built-in.  
3,6 kg



**188-471** Transmitter and receiver  
24V DC  
0,3 kg

